

MADRID

Neoclassical Madrid



By Borja Lozano and Marcos Sánchez Rosales

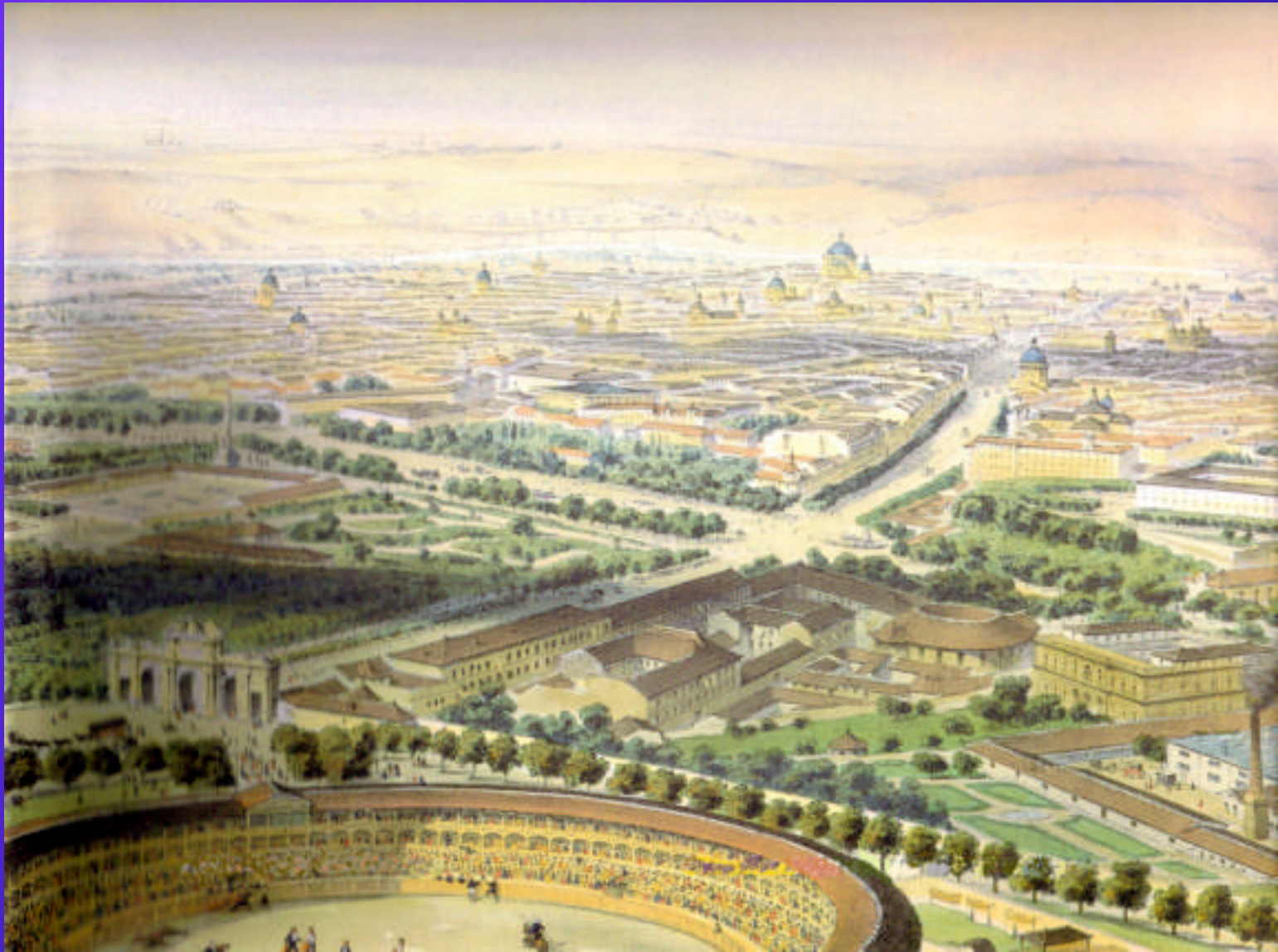
COMENIVS 2008-2009



Contents: (from Cibeles fountain to the Astronomical Observatory)

- Ancient Panoramic View.
- Modern Panoramic View.
- Cibeles Fountain.
- Apollo's Fountain.
- Neptunu's Fountain.
- Prado Museum.
- Bothanical Garden.
- Astronomical Observatory.

Ancient Panoramic View:



Modern Panoramic Wiew:



Cibeles Fountain:



It's the most famous in Madrid. It represents the protection over agriculture as goddess from the greekroman mythology.

It was raised in 1872.

Apollo's Fountain:



D.O.M
S.P.Q.M
CAROLO III
AVG.P.P.
D.D.
MDCCLXXVII

To the best
and greatest
lord, the
Senatus and
the People of
Madrid, to
Charles III.
Augustus,
Nation's
father



It's located in the middle of the Prado's Walk.
The god Apollo with his lyre represents the
protection over arts and sciences.

Neptunu's Fountain



It represents the god of the sea. He goes on a car ridden by aquatic horses, called "hipocampos" too. This fountain was seeing the Cibeles fountain.

The Prado Museum



Designed by Juan de Villanueva in 1785 and open in 1819, is one of the largest Art Galleries in the world. It houses collections of Flemish, Italian and Spanish painting.

The Prado Museum :

Three facades



**Goya's Gate
in Ionic style**



**Velasquez's
Gate
in Doric style**



**Murillo's Gate
In Corinthian
style**

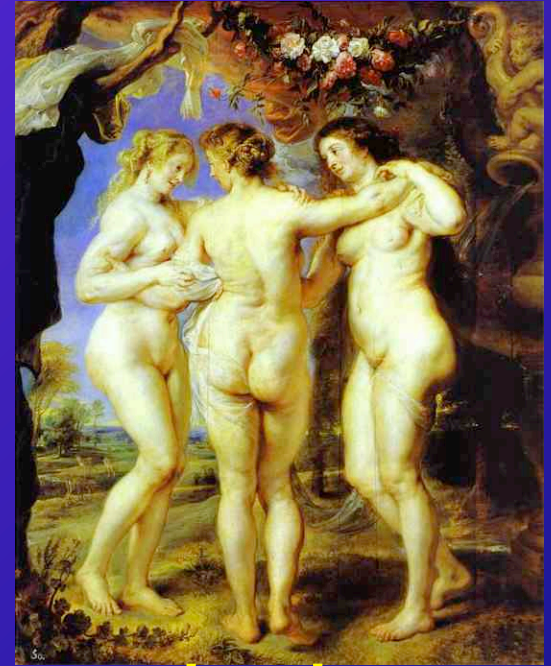
The Prado Museum : Paintings



The Meninas



The Greco



The three



Paris trial



The third of May

The Bothanical Garden:



It was moved by king's order next to the Prado's Walk because he loved it. This big extension has got a bust of Linneo, the scientific who assigned to all beings latin names.

The Astronomical Observatory:

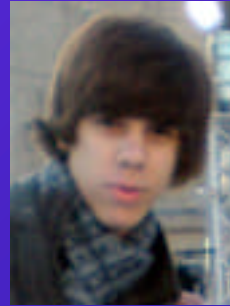


It's located on a small hill near Retiro's Park and it was constructed in 1846. It has got ionic columns. At the beginning, it was dedicated to every type of sciences, but from the 20 century it was dedicated only to astronomy.

Presentation made by:



Borja Lozano



Marcos Sánchez

Teacher:



María Rosa Ruiz de Elvira